



National Gambling Statistics

National Gambling Board
2009/2010 Financial Year



Notes

- **TO** = Turnover (the rand value of money wagered including money wagered from winnings)
- **GGR** = Gross Gambling Revenue (the rand value of the gross revenue of an operator i.e. turnover less winnings paid to players)
- **Tax** = Gambling tax (gambling tax levied by and collected by Provincial Licensing Authorities)
- **RTP** = Return to player/punter
- **F2010** = 2009/2010 financial year
- **FQ1** = 01 April - 30 June 2009
- **FQ2** = 01 July - 30 September 2009
- **FQ3** = 01 October - 31 December 2009
- **FQ4** = 01 January - 31 March 2010

Source of data

Statistics are based on quarterly figures (GGR and taxes/levies) received from all the Provincial Licensing Authorities (PLAs), as well as annual audited data as received from almost all PLAs.

Some quarterly figures are based on original data received from PLAs, and might differ from annual audited data.

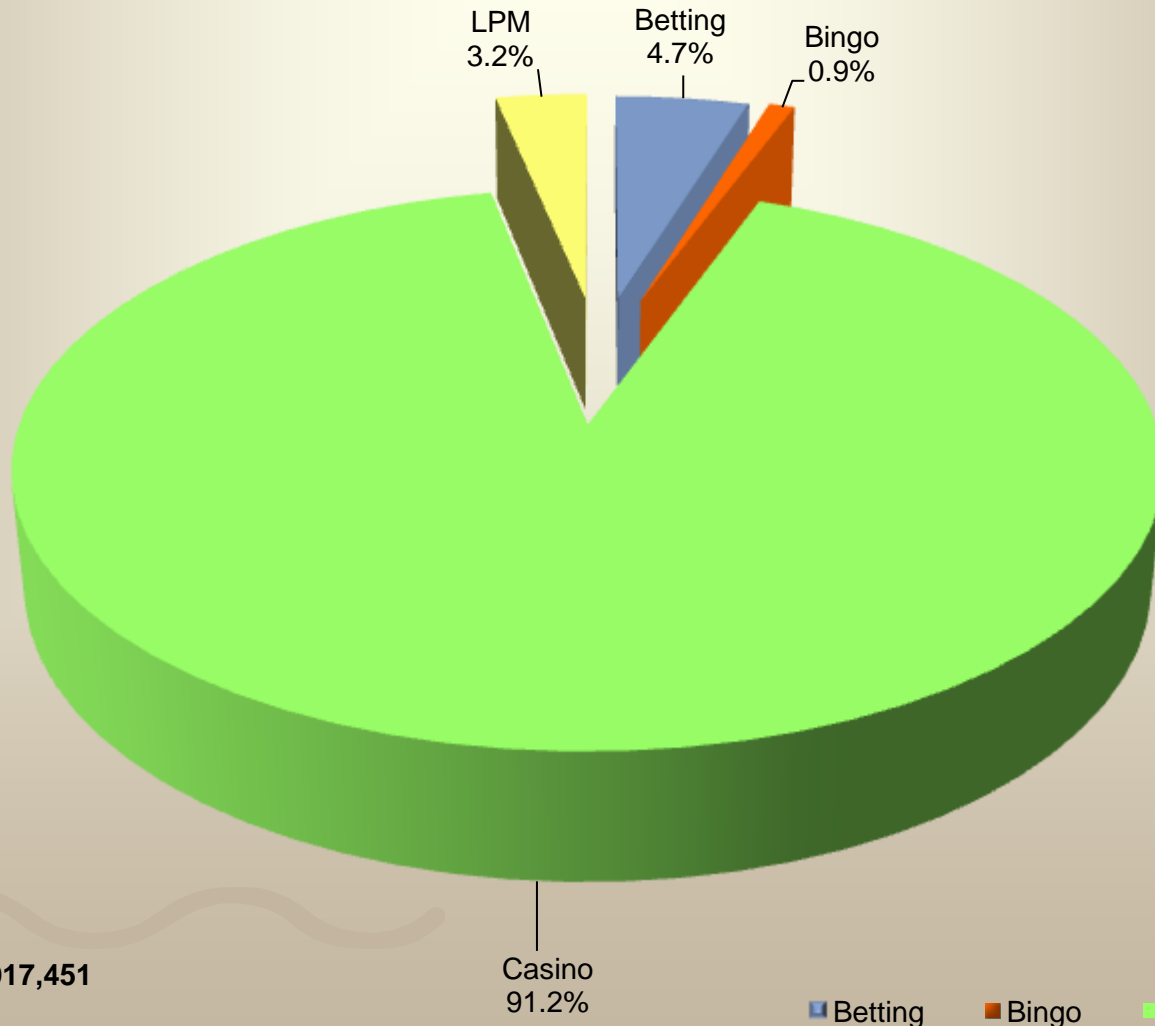
Disclaimer

The National Gambling Board is, therefore, unable to warrant the accuracy of the information, data and compilation as contained in this report.

Readers are deemed to have waived and renounced all rights to any claim against the above-mentioned institution and their employees for any loss or damage of any nature whatsoever arising from the use or reliance upon such information.

Turnover per gambling mode – F2010: Qrt 1-4

[The Rand value of money wagered including money wagered from winnings]



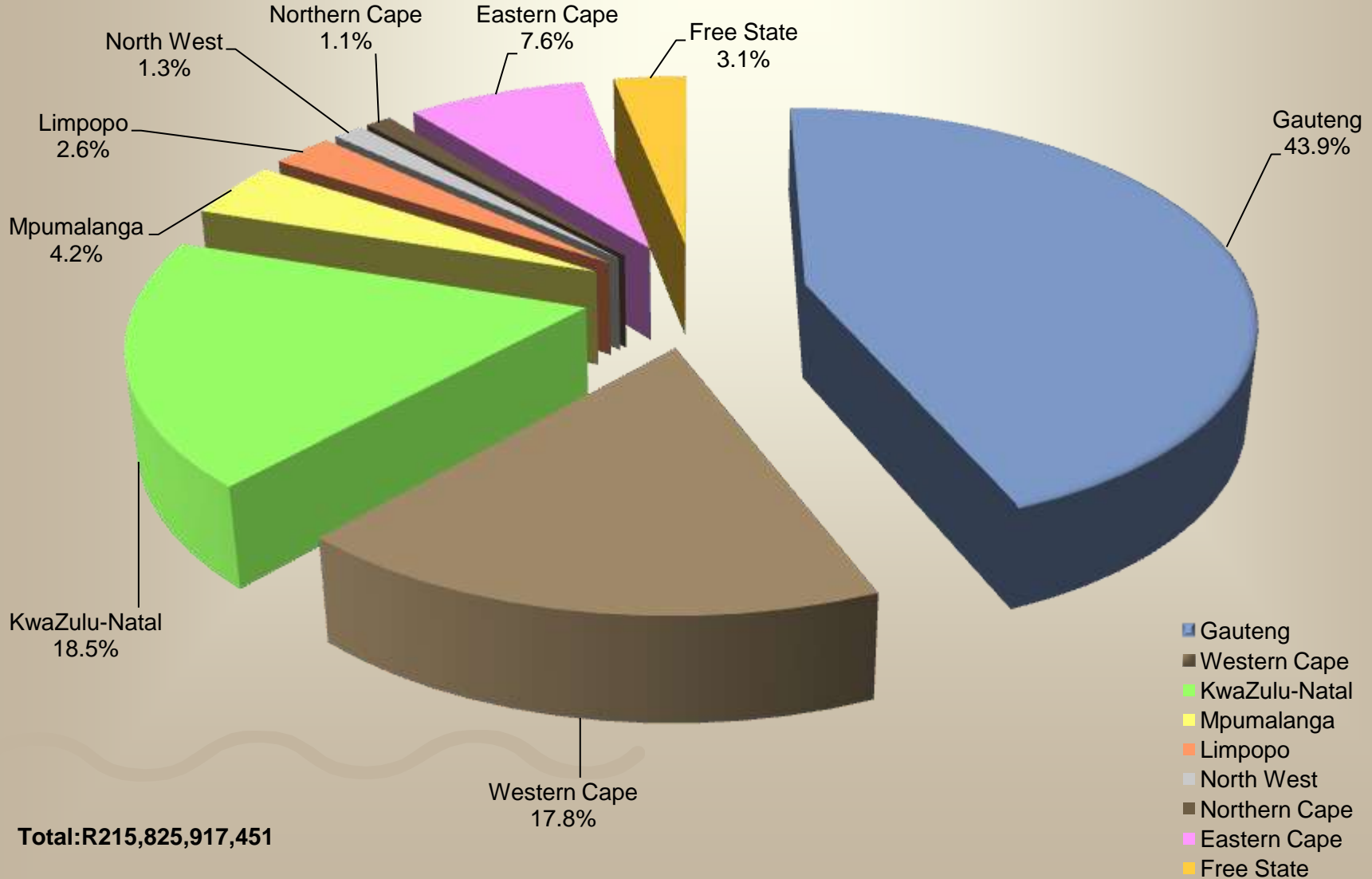
Total: R215,825,917,451

Casino
91.2%

Betting Bingo Casino LPM

Turnover per province - F2010: Qrt 1-4

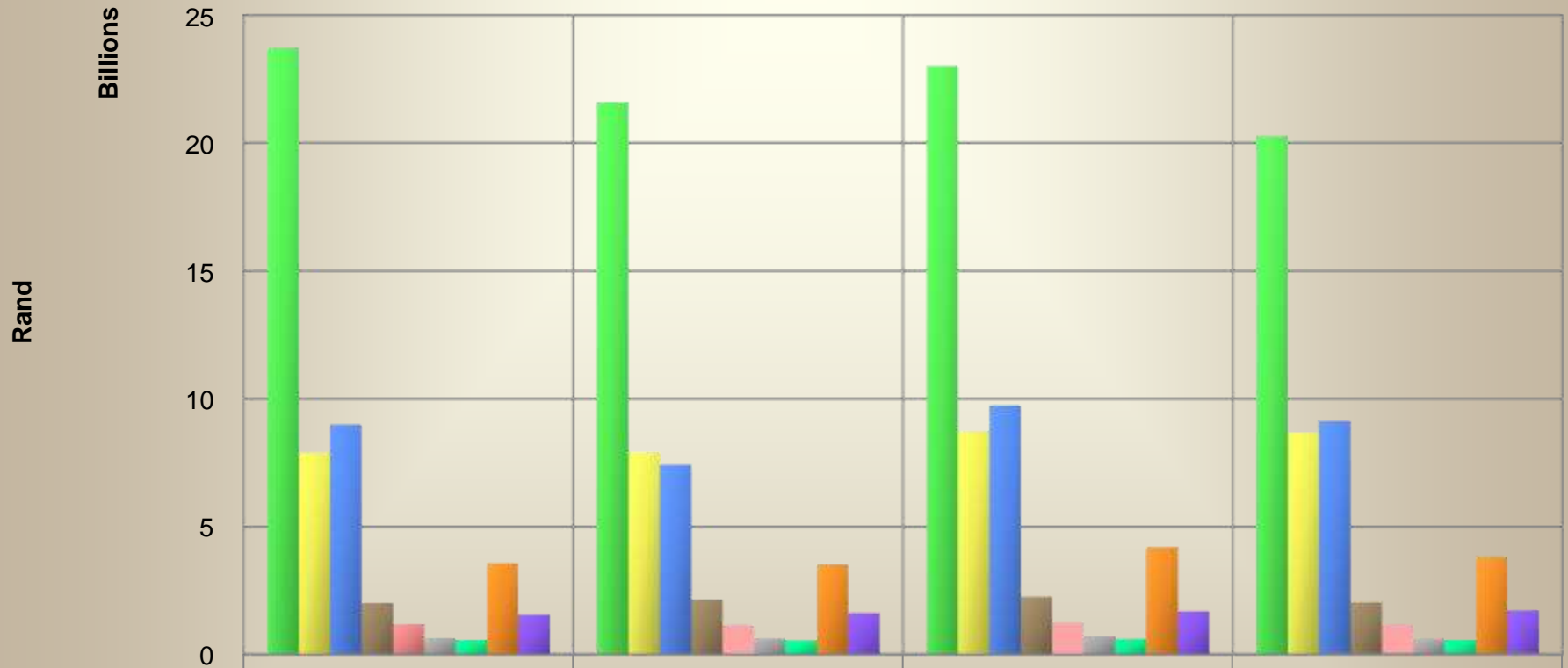
[The Rand value of money wagered including money wagered from winnings]



Total: R215,825,917,451

Quarterly casino turnover - F2010: Qrt 1-4

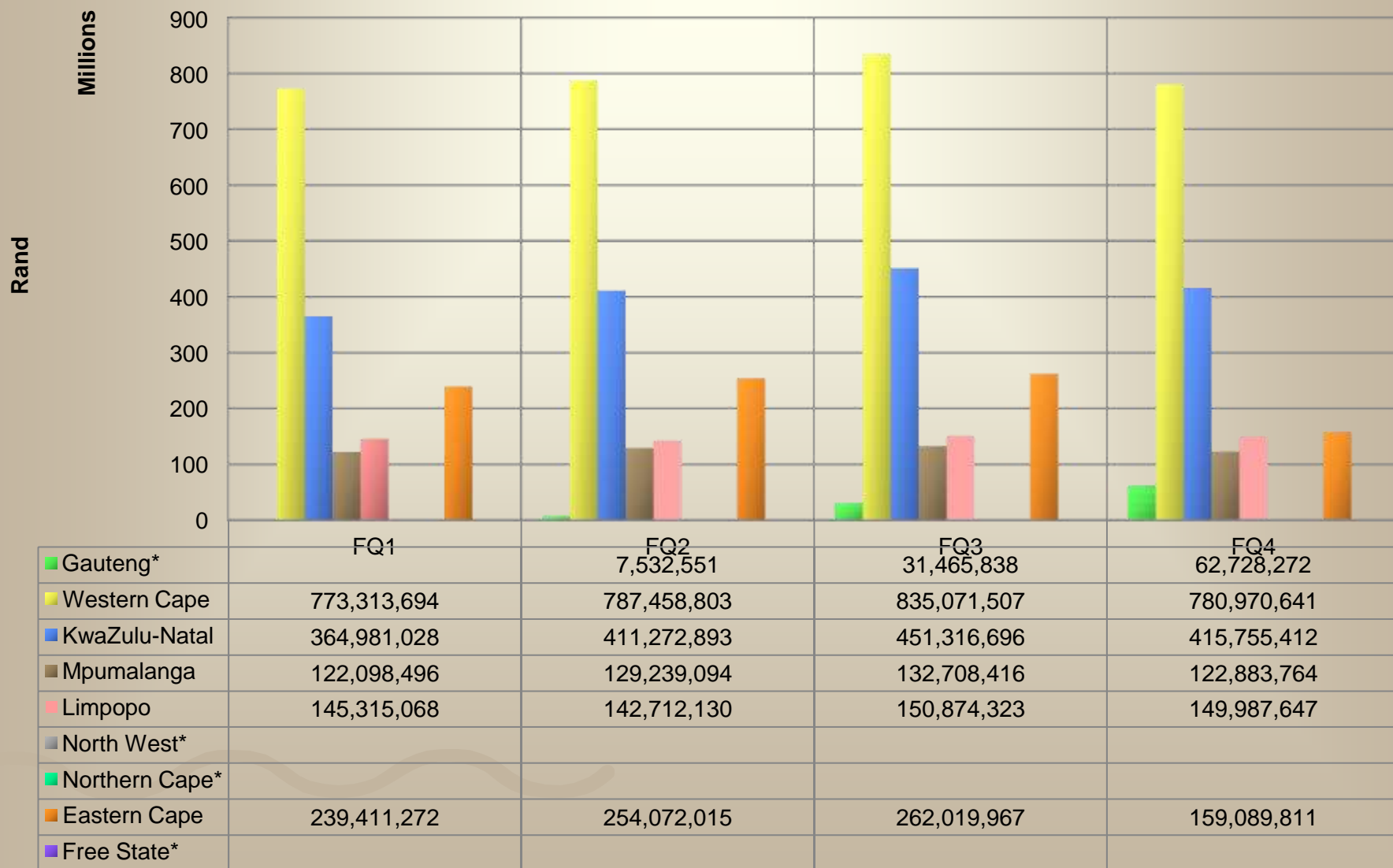
[The Rand value of money wagered including money wagered from winnings]



	FQ1	FQ2	FQ3	FQ4
Gauteng	23,719,000,988	21,611,545,939	23,015,422,361	20,272,536,474
Western Cape	7,892,160,164	7,921,728,950	8,737,417,471	8,679,491,105
KwaZulu-Natal	8,986,347,604	7,400,401,944	9,727,165,248	9,124,502,000
Mpumalanga	2,010,104,436	2,144,381,518	2,258,422,623	2,034,561,423
Limpopo	1,188,809,816	1,140,290,848	1,243,047,072	1,155,230,207
North West	639,672,367	623,132,722	708,004,275	595,865,304
Northern Cape	560,340,241	552,274,341	597,686,514	569,458,369
Eastern Cape	3,555,470,455	3,528,674,420	4,203,111,154	3,813,648,031
Free State	1,546,480,628	1,618,636,948	1,690,844,149	1,711,866,933

Quarterly LPM turnover - F2010: Qrt 1-4

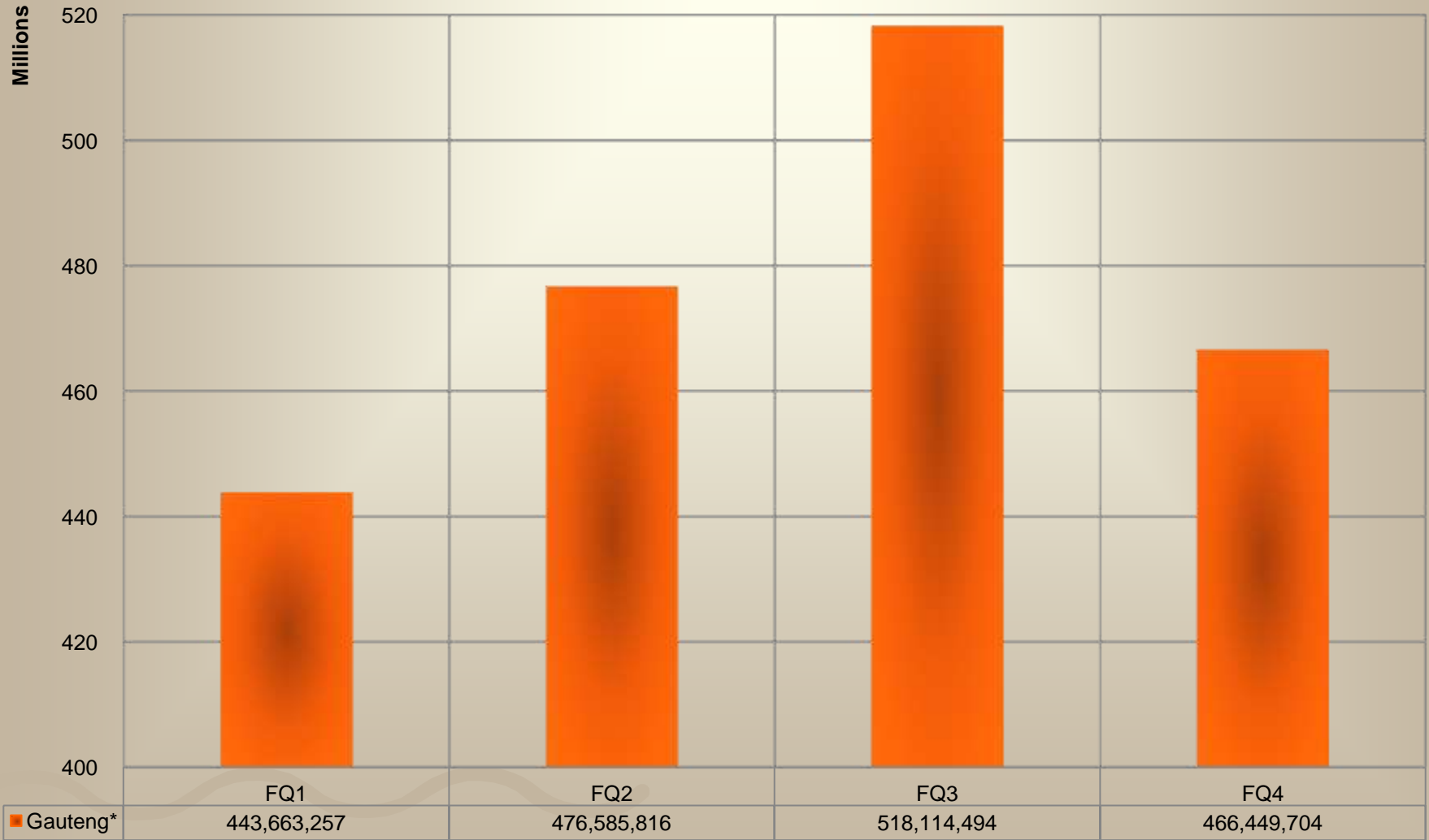
[The Rand value of money wagered including money wagered from winnings]



* LPMs not rolled out

Quarterly bingo turnover - F2010: Qrt 1-4*

[The Rand value of money wagered including money wagered from winnings]

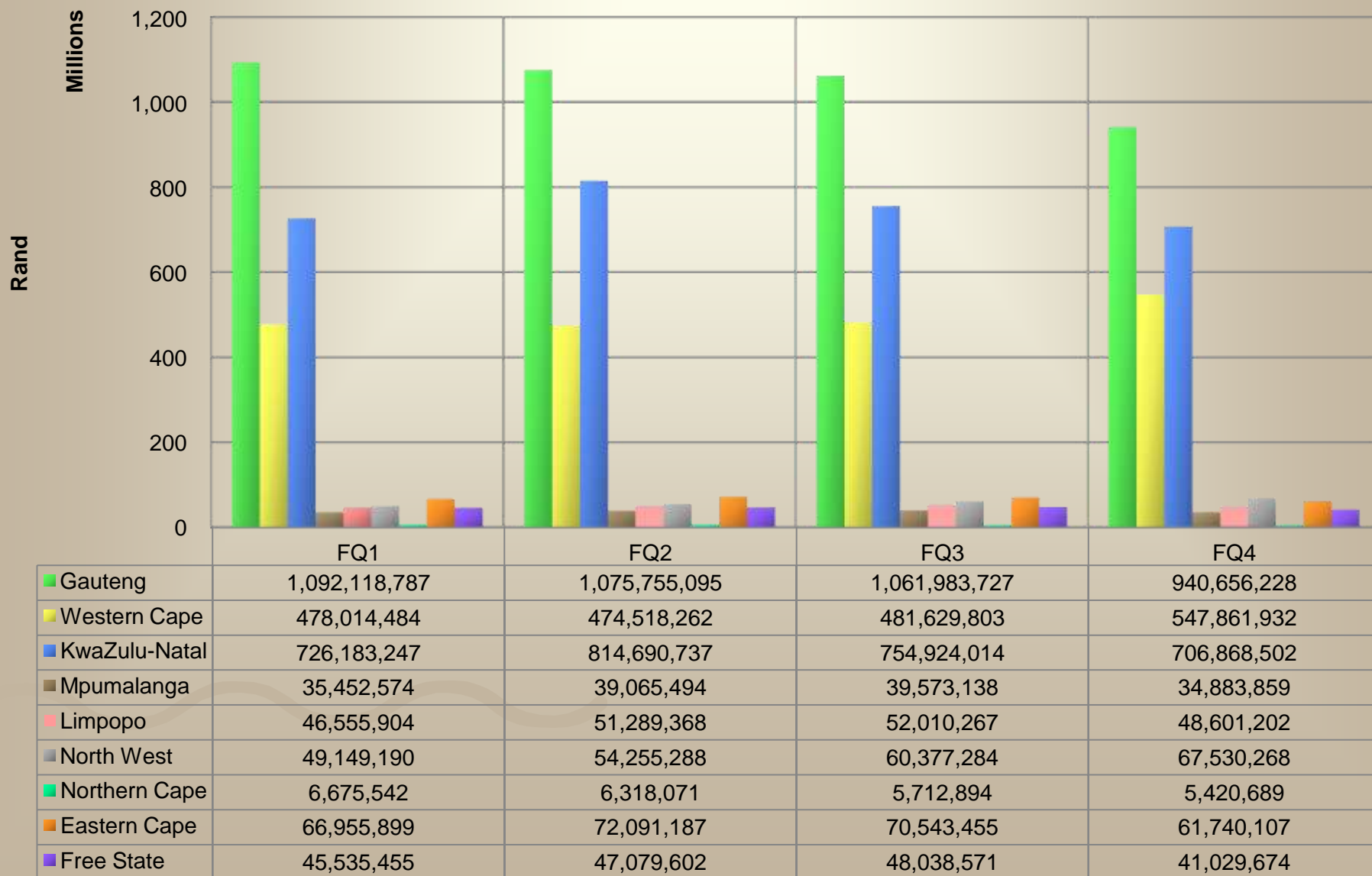


* Bingo offered for play only in Gauteng

Quarterly betting turnover – F2010: Qrt 1-4

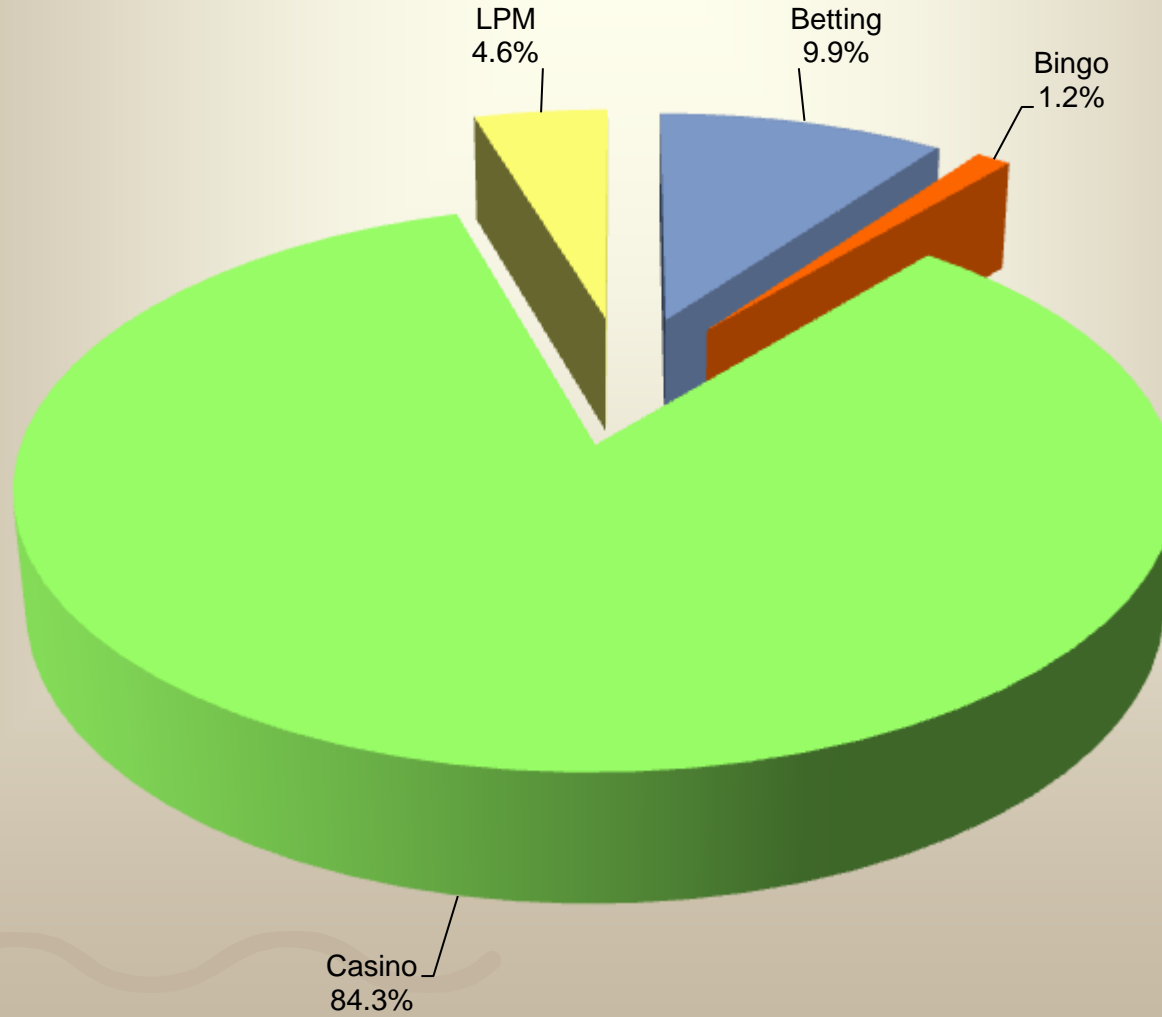
[Bookmakers & Totalisators]

[The Rand value of money wagered including money wagered from winnings]



GGR per gambling mode – F2010: Qrt 1-4

[Rand value of the gross revenue of an operator]

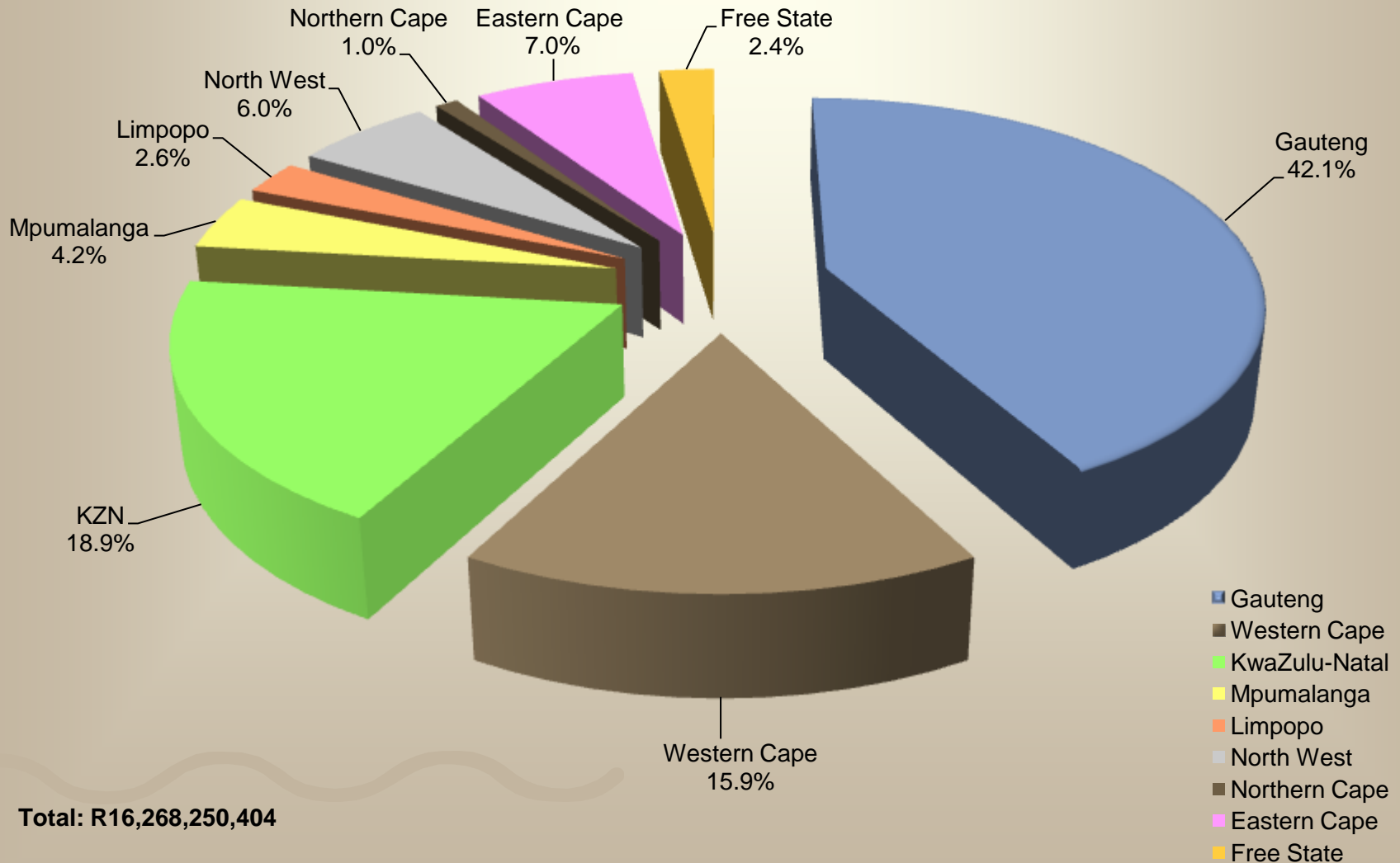


Total: R16,268,250,404

■ Betting ■ Bingo ■ Casino ■ LPM

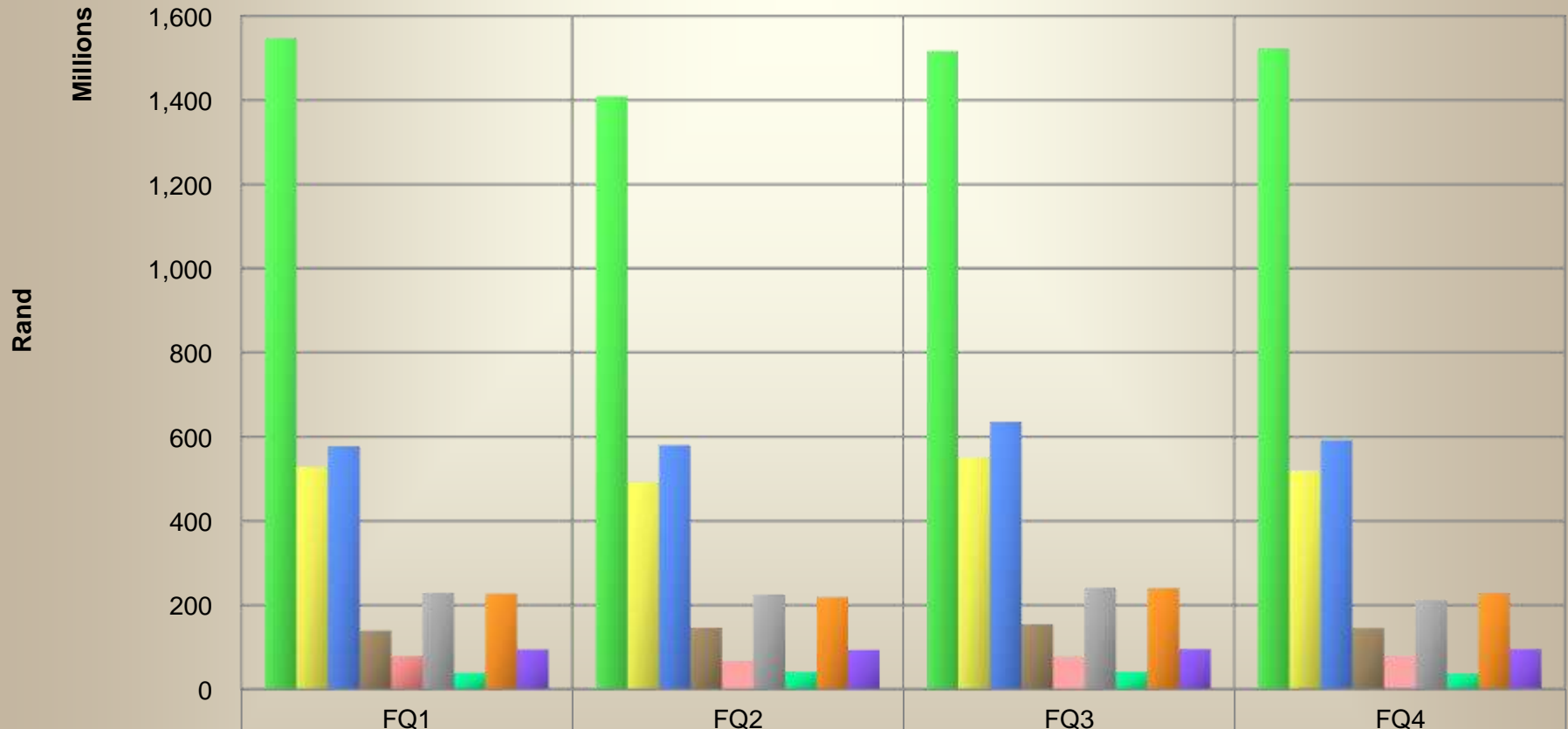
GGR per province - F2010: Qrt 1-4

[Rand value of the gross revenue of an operator]



Quarterly casino GGR - F2010: Qrt 1-4

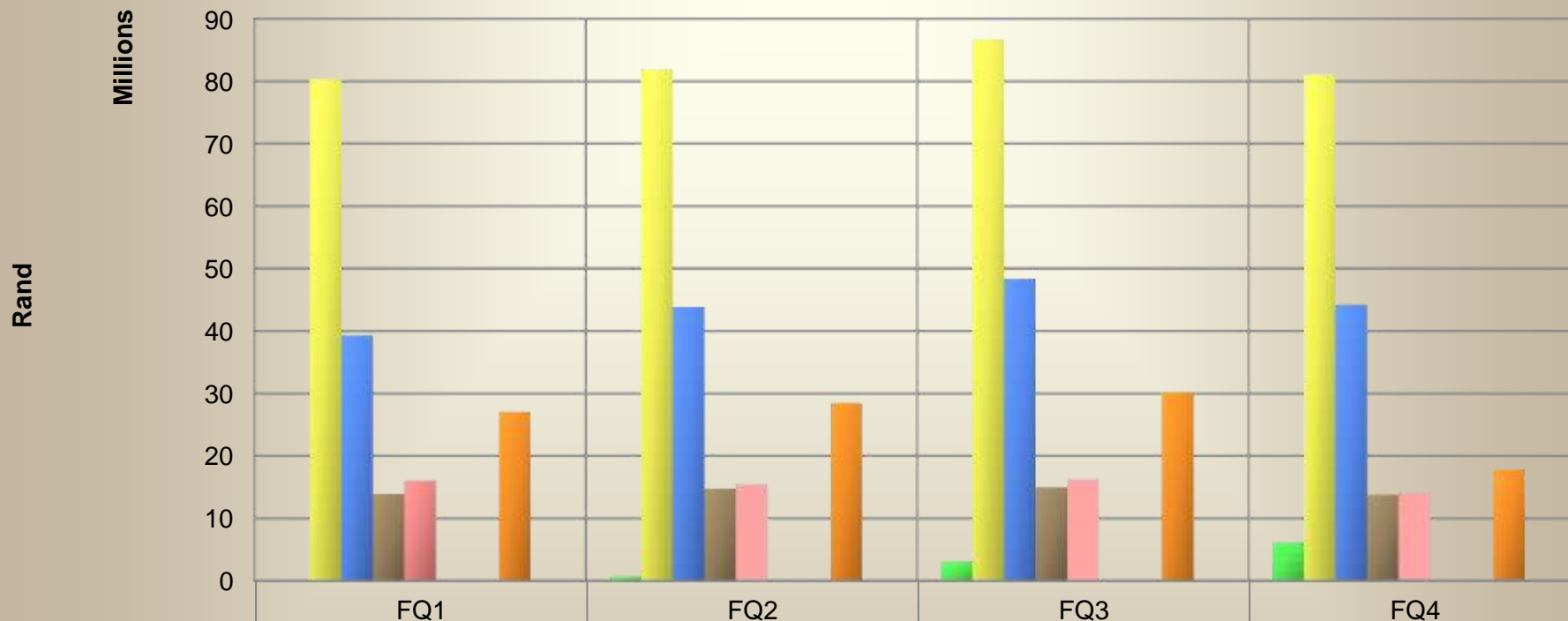
[Rand value of the gross revenue of an operator]



	FQ1	FQ2	FQ3	FQ4
Gauteng	1,548,061,012	1,408,226,534	1,516,419,360	1,523,815,020
Western Cape	529,045,056	491,656,232	551,242,099	519,542,185
KwaZulu-Natal	578,141,667	579,629,629	636,212,947	591,410,277
Mpumalanga	139,324,904	146,682,126	154,611,858	145,126,900
Limpopo	78,890,811	67,442,452	76,669,331	80,082,511
North West	229,619,843	225,025,658	242,210,339	211,599,331
Northern Cape	39,157,329	41,930,231	41,445,632	38,157,224
Eastern Cape	227,615,343	218,796,893	240,734,010	229,214,038
Free State	94,520,776	93,027,906	95,308,811	95,736,921

Quarterly LPM GGR - F2010: Qrt 1-4*

[Rand value of the gross revenue of an operator]

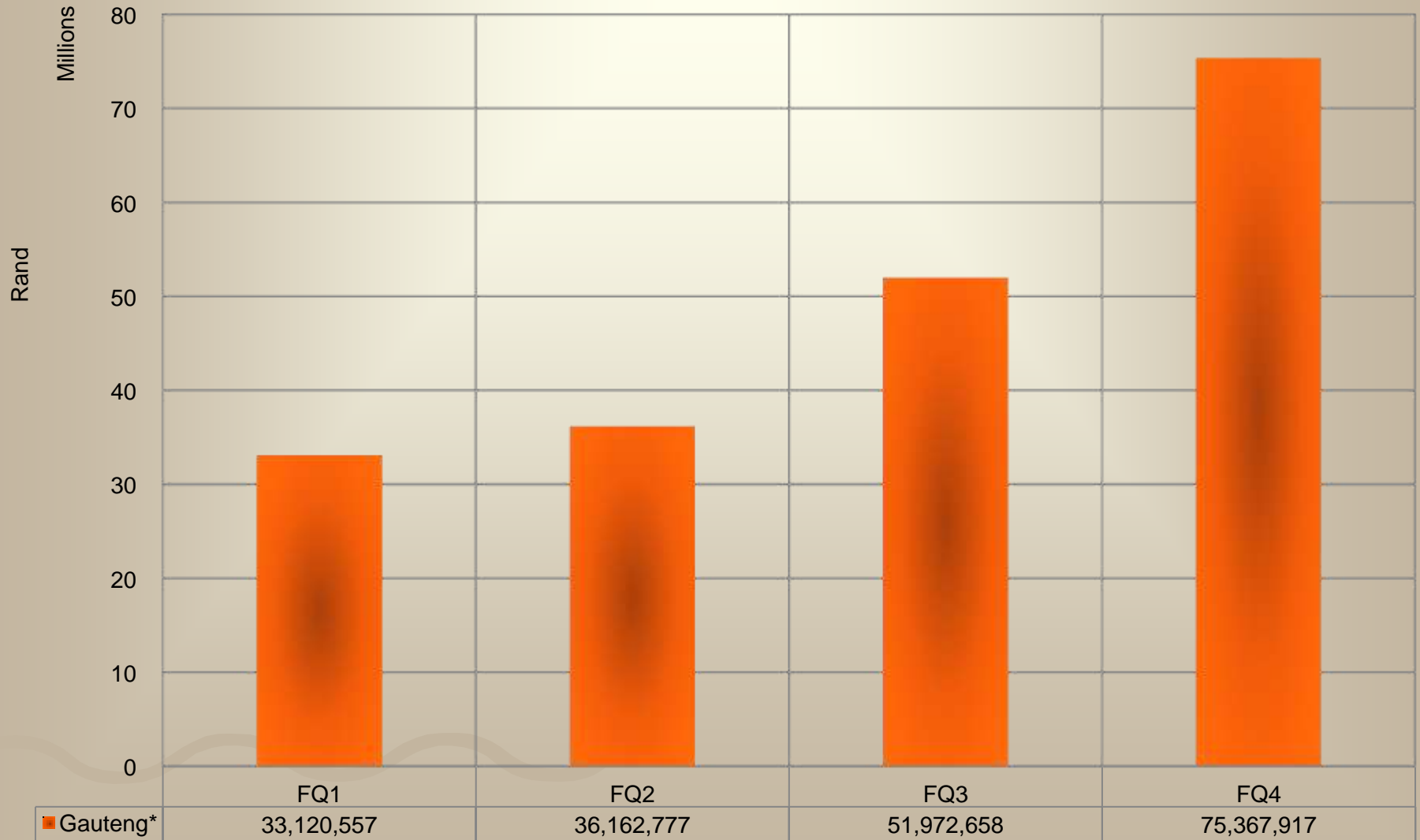


	FQ1	FQ2	FQ3	FQ4
■ Gauteng*		745,266	3,107,213	6,124,377
■ Western Cape	80,375,729	81,987,779	86,709,226	81,053,765
■ KwaZulu-Natal	39,232,835	43,834,439	48,406,983	44,217,934
■ Mpumalanga	13,932,593	14,739,737	14,991,765	13,776,309
■ Limpopo	16,011,230	15,461,826	16,263,518	14,081,833
■ North West*				
■ Northern Cape*				
■ Eastern Cape	27,020,900	28,492,751	30,223,578	17,827,013
■ Free State*				

* LPMs not yet rolled out

Quarterly bingo GGR - F2010: Qrt 1-4*

[Rand value of the gross revenue of an operator]

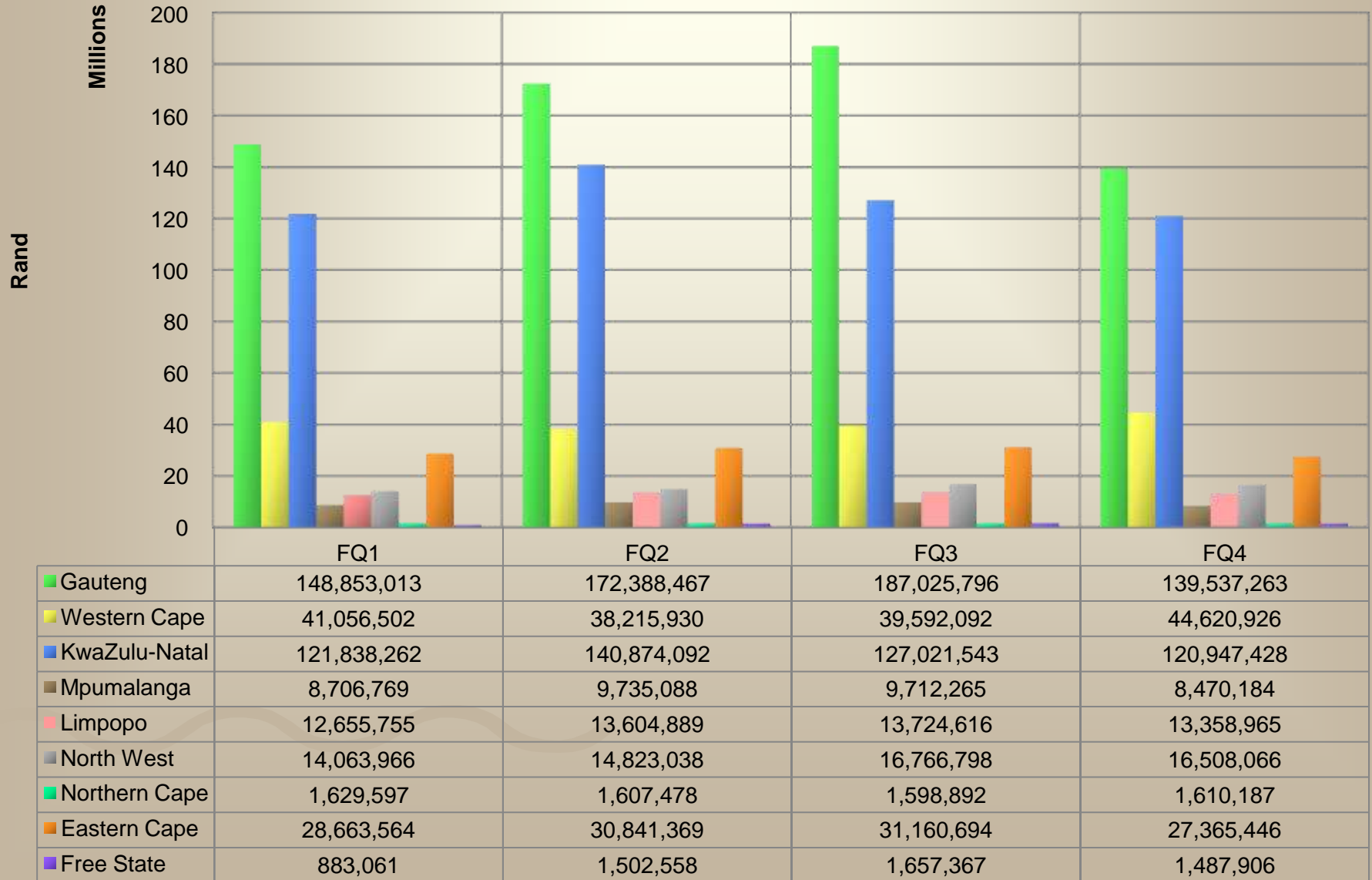


* Bingo offered for play only in Gauteng

Quarterly betting GGR – F2010: Qrt 1-4

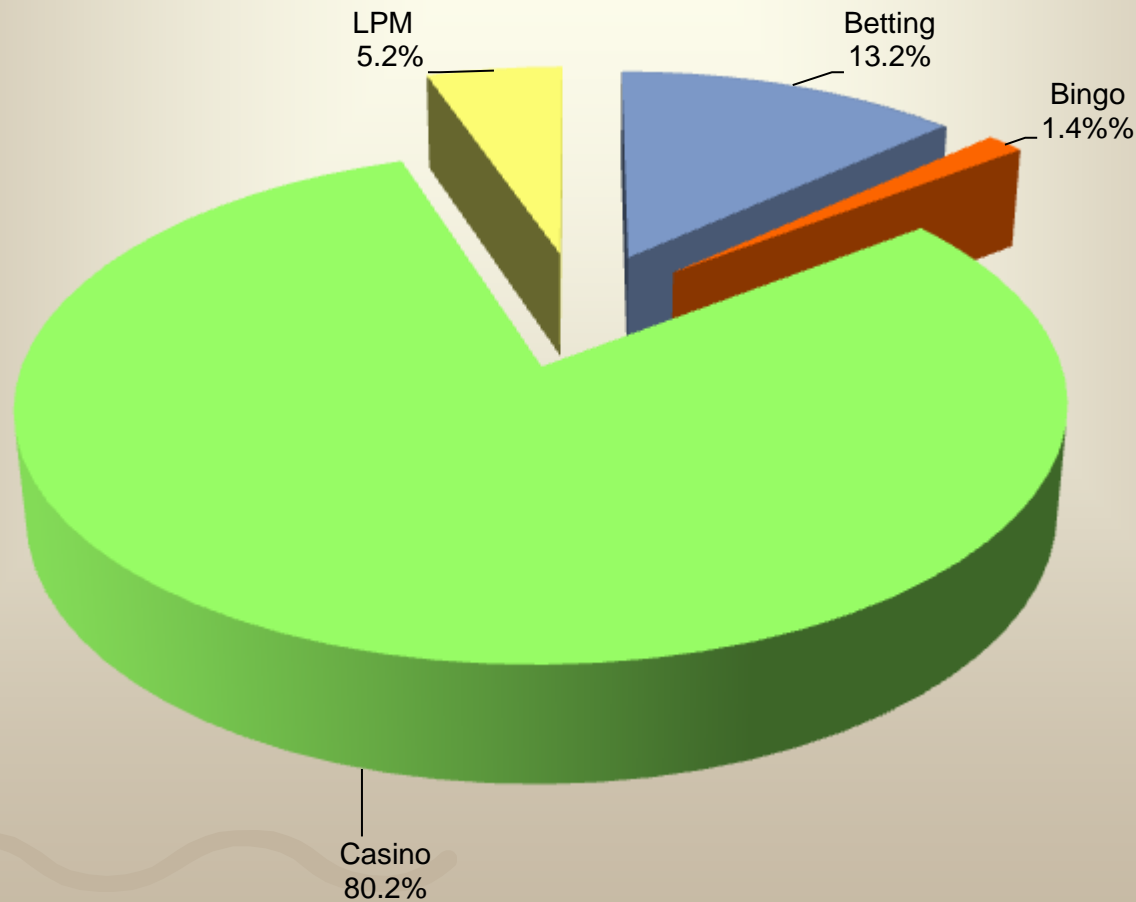
[Bookmakers & Totalisators]

[Rand value of the gross revenue of an operator]



Tax/levy contribution per gambling mode – F2010: Qrt 1-4

[Gambling tax levied by and collected by PLAs]

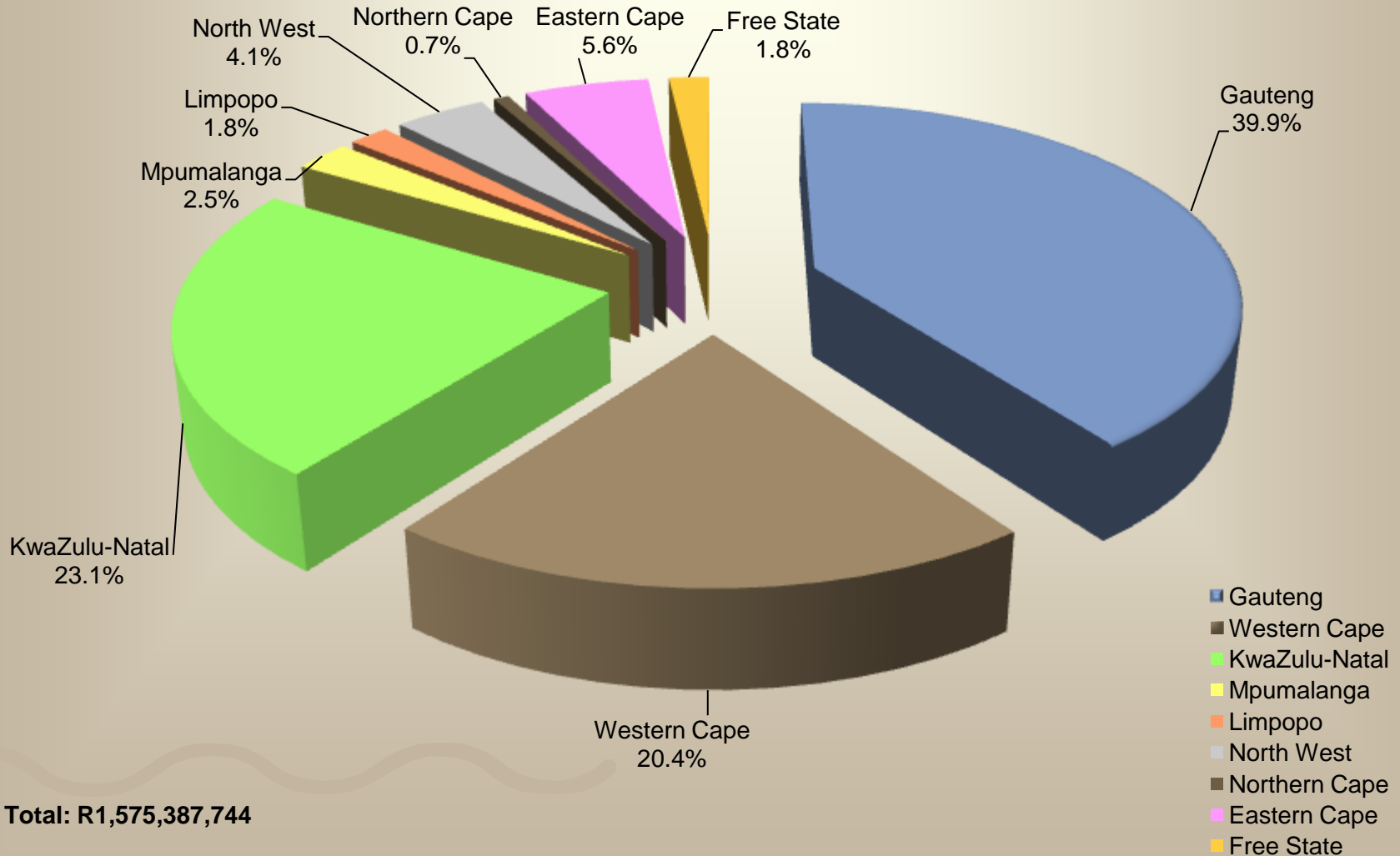


Total: R1,575,387,744

■ Betting ■ Bingo ■ Casino ■ LPM

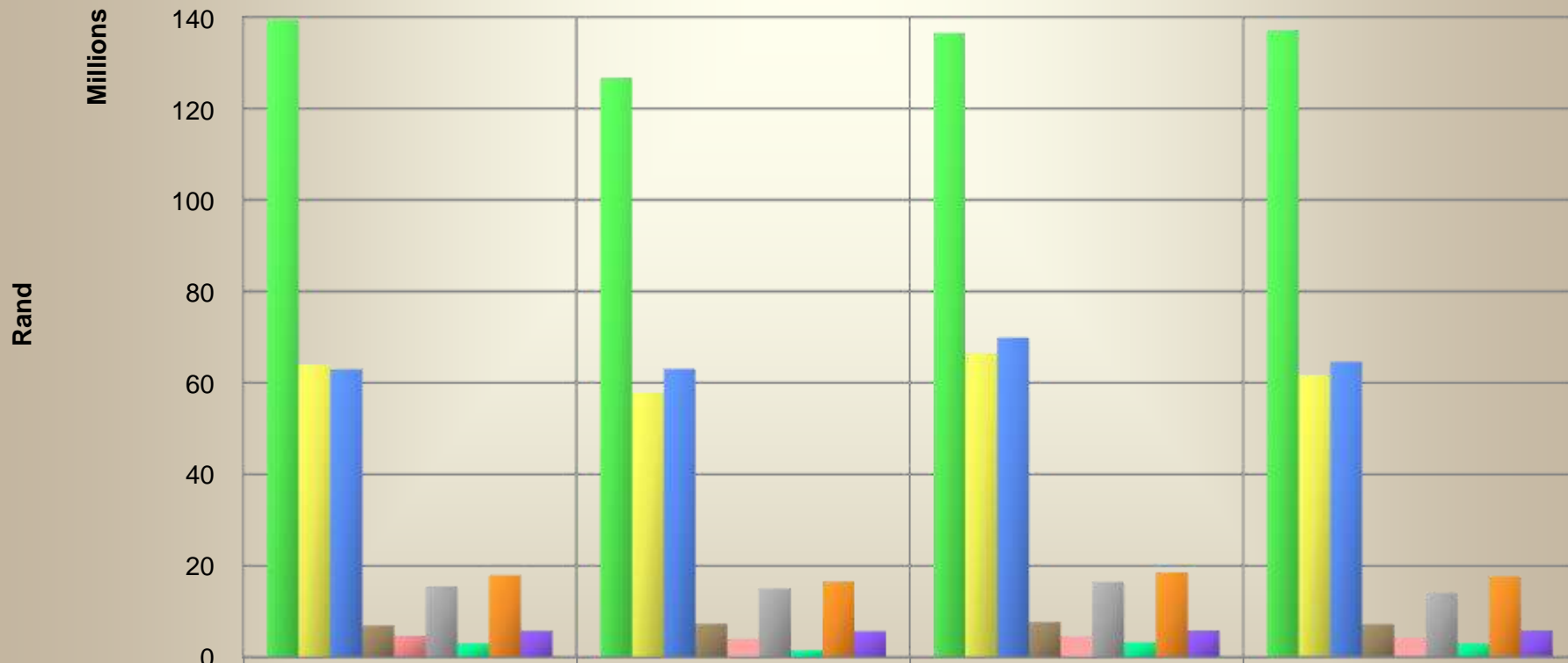
Tax/levy contribution per province – F2010: Qrt 1-4

[Gambling tax levied by and collected by PLAs]



Quarterly casino tax/levies - F2010: Qrt 1-4

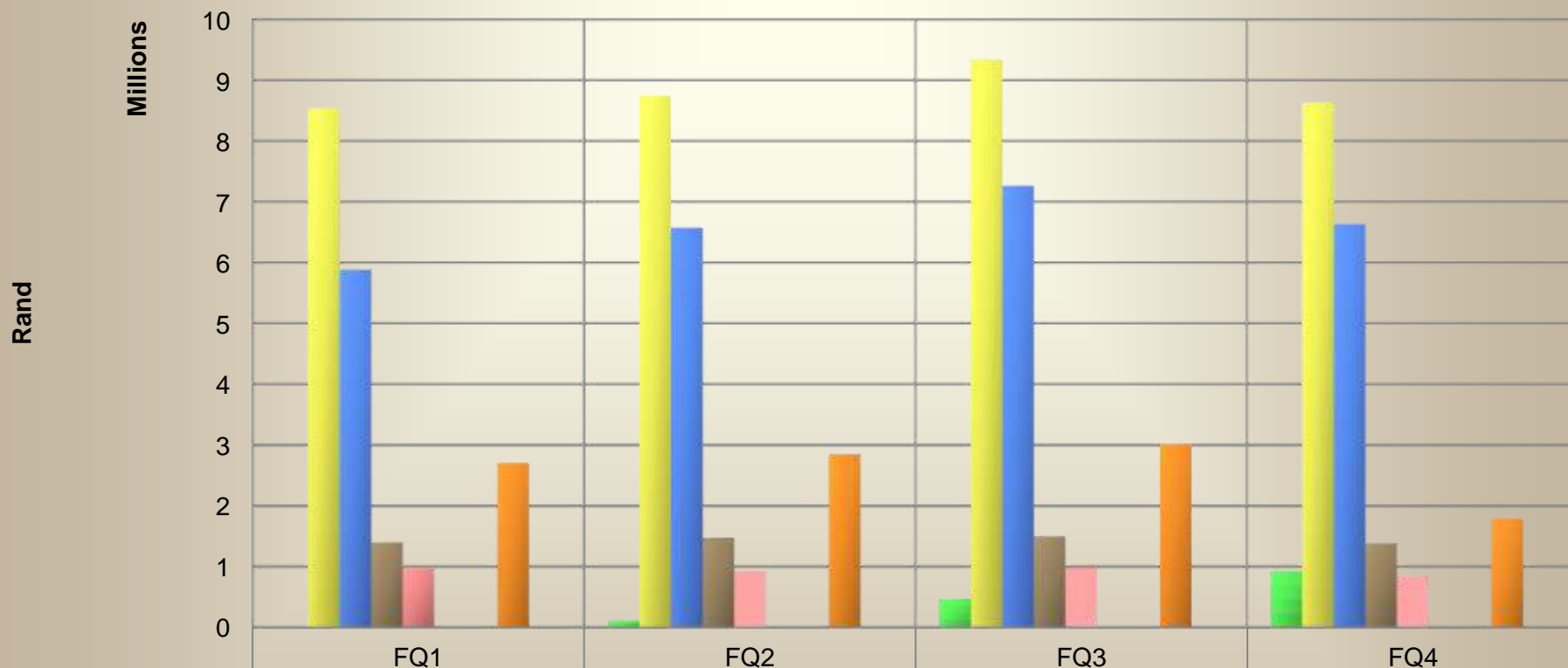
[Gambling tax levied by and collected by PLAs]



	FQ1	FQ2	FQ3	FQ4
Gauteng	139,325,491	126,740,388	136,477,743	137,143,352
Western Cape	64,025,195	57,821,363	66,418,654	61,718,904
KwaZulu-Natal	62,964,653	63,048,558	69,864,812	64,553,819
Mpumalanga	6,966,245	7,334,106	7,730,593	7,256,345
Limpopo	4,733,449	4,046,547	4,540,160	4,214,869
North West	15,537,751	15,014,187	16,498,769	14,043,459
Northern Cape	3,126,928	1,585,730	3,315,651	3,052,578
Eastern Cape	17,866,571	16,515,167	18,620,880	17,592,645
Free State	5,800,699	5,712,528	5,853,437	5,891,808

Quarterly LPM tax/levies - F2010: Qrt 1-4*

[Gambling tax levied by and collected by PLAs]

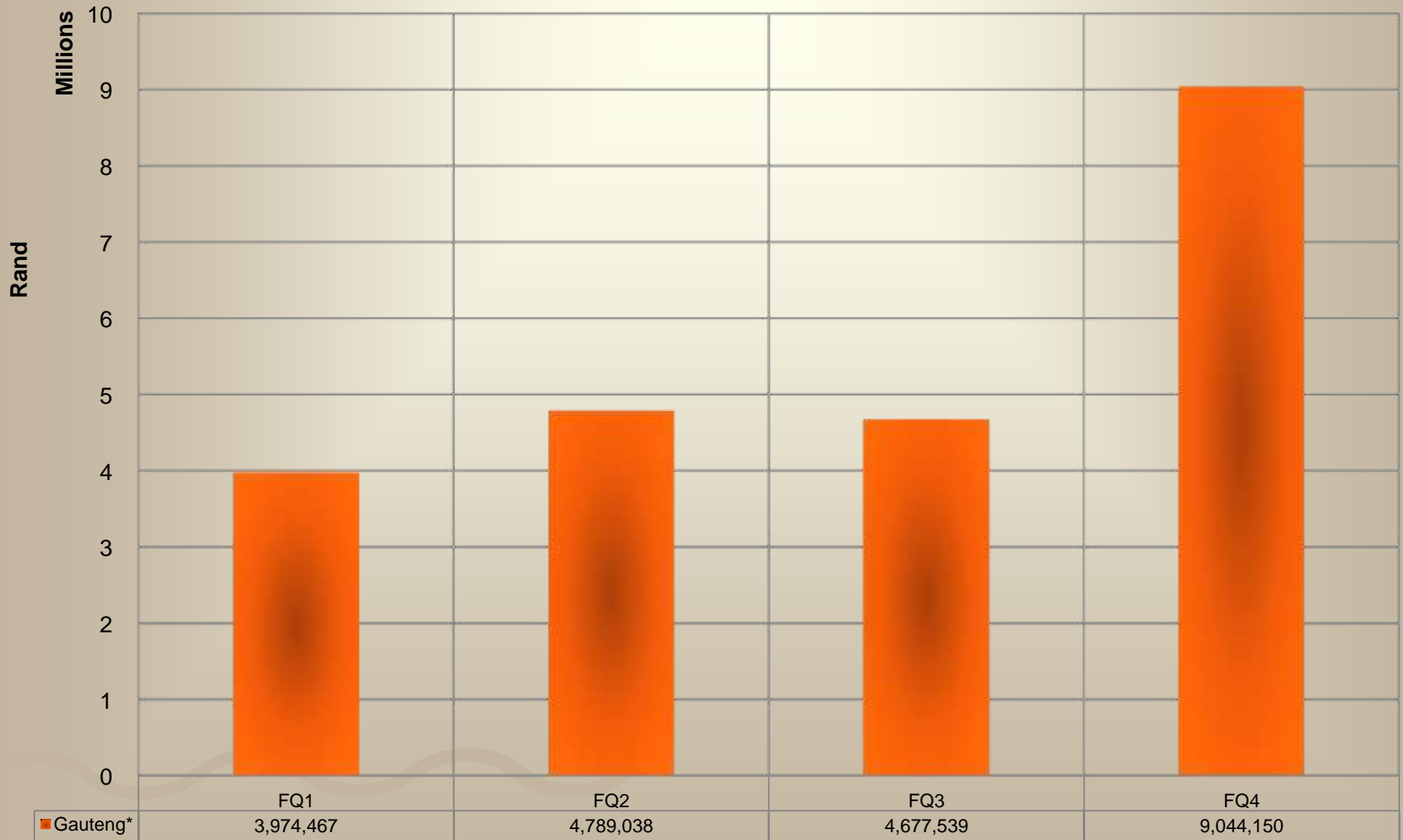


	FQ1	FQ2	FQ3	FQ4
Gauteng*		111,790	466,082	918,657
Western Cape	8,546,966	8,748,472	9,338,653	8,631,721
KwaZulu-Natal	5,884,925	6,575,165	7,260,462	6,632,690
Mpumalanga	1,393,259	1,473,974	1,499,177	1,377,631
Limpopo	960,674	927,710	975,811	844,910
North West*				
Northern Cape*				
Eastern Cape	2,702,090	2,849,275	3,022,358	1,782,701
Free State*				

* LPMs not yet rolled out

Quarterly bingo tax/levies - F2010: Qrt 1-4*

[Gambling tax levied by and collected by PLAs]

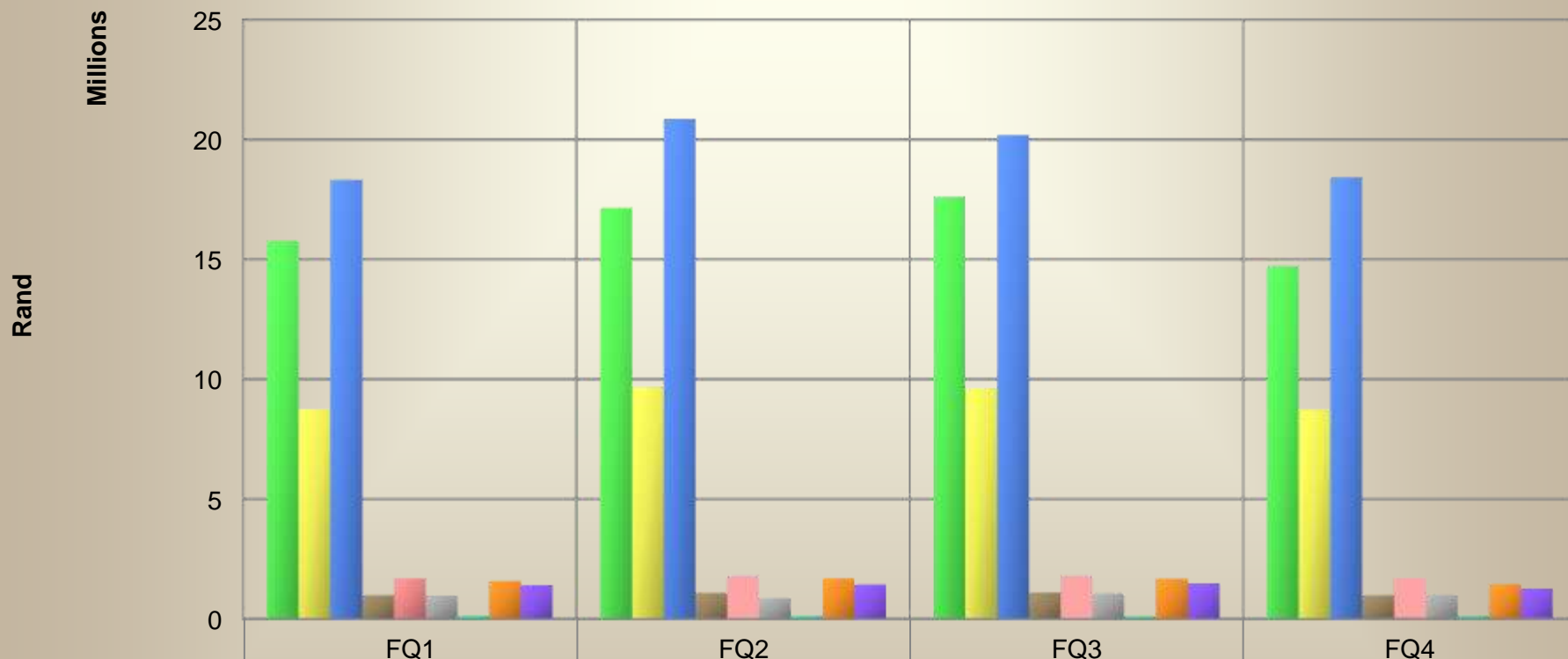


* Bingo offered for play only in Gauteng

Quarterly betting tax/levies – F2010: Qrt 1-4

[Bookmakers & Totalisators]

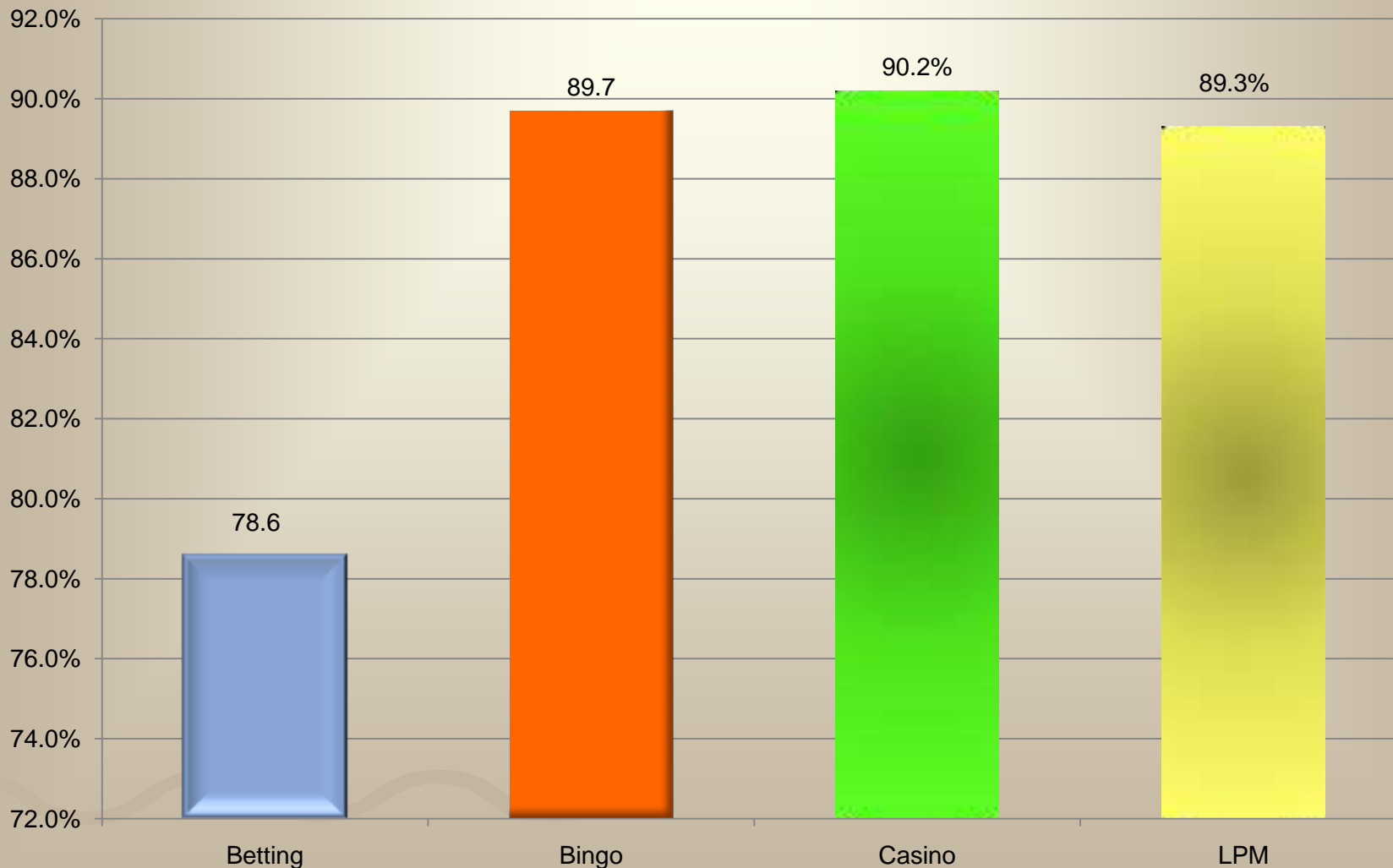
[Gambling tax levied by and collected by PLAs]



	FQ1	FQ2	FQ3	FQ4
Gauteng	15,753,170	17,145,356	17,617,216	14,716,115
Western Cape	8,747,195	9,697,343	9,614,246	8,734,237
KwaZulu-Natal	18,314,870	20,863,344	20,175,083	18,429,161
Mpumalanga	987,172	1,076,650	1,109,357	986,304
Limpopo	1,690,238	1,801,866	1,804,618	1,711,178
North West	974,255	865,106	1,064,244	993,311
Northern Cape	130,368	126,621	117,724	121,476
Eastern Cape	1,582,302	1,683,996	1,674,064	1,457,718
Free State	1,405,563	1,435,282	1,486,580	1,270,620

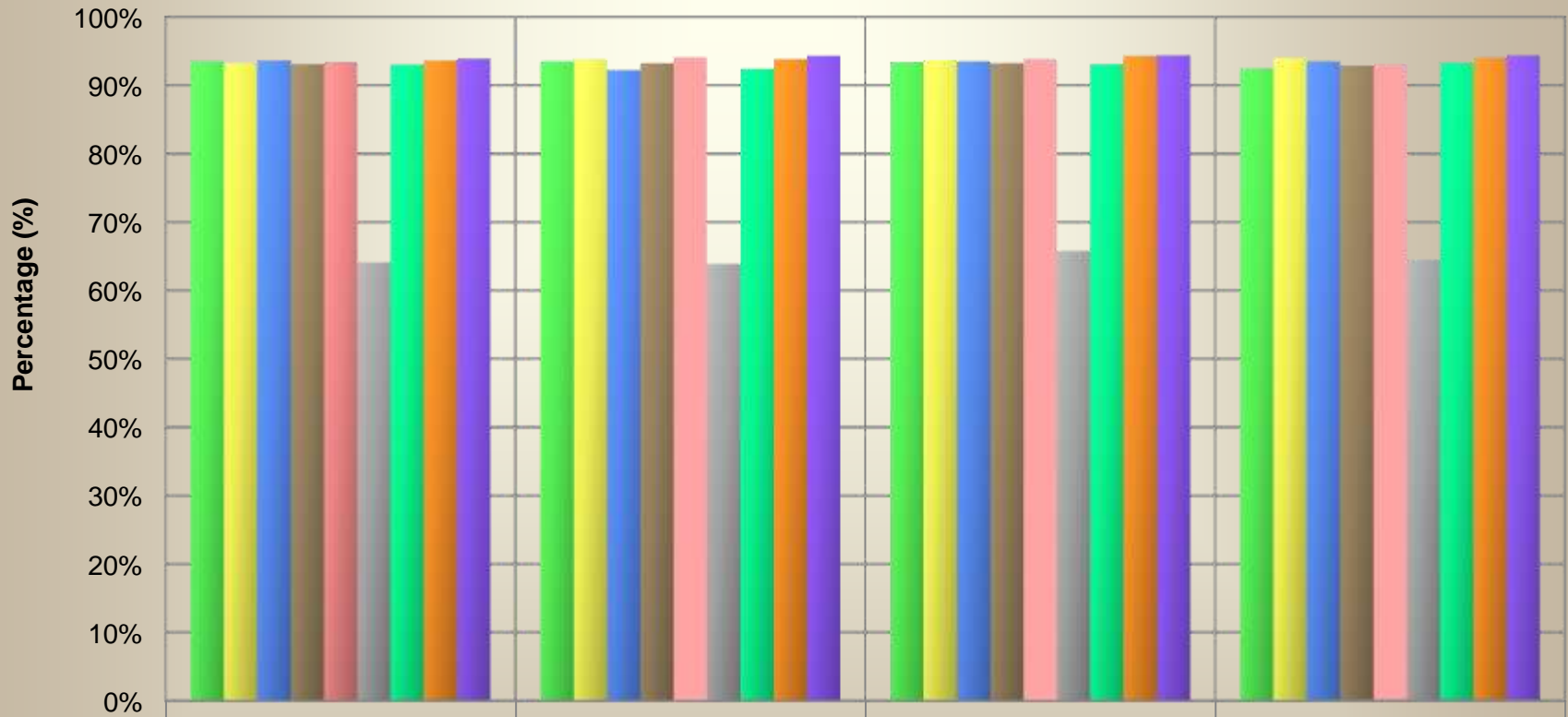
RTP % per gambling mode – F2010: Qrt 1-4

[Return to player/punter]



Quarterly casino RTP % - F2010: Qrt 1-4

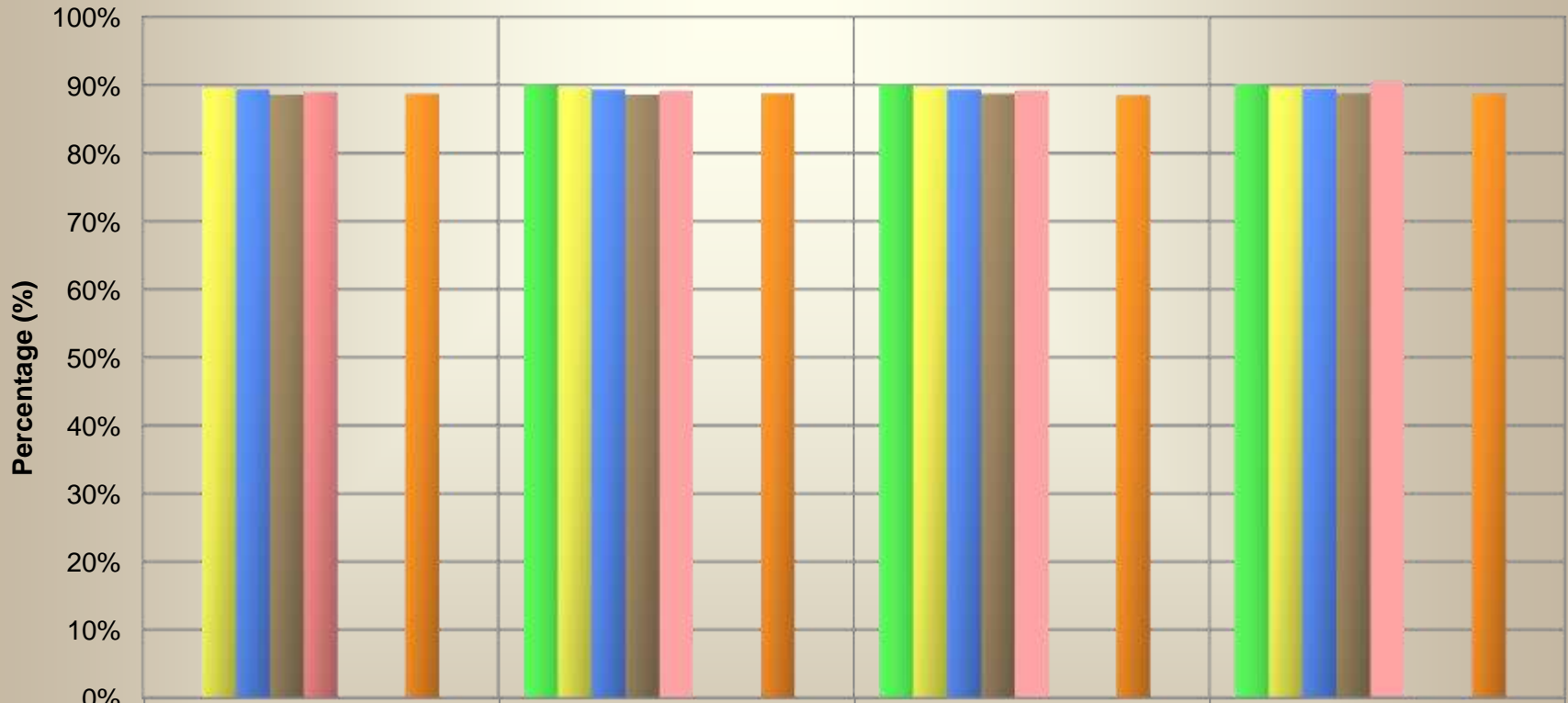
[Return to player/punter]



	FQ1	FQ2	FQ3	FQ4
■ Gauteng	93.5%	93.5%	93.4%	92.5%
■ Western Cape	93.3%	93.8%	93.7%	94.0%
■ KwaZulu-Natal	93.6%	92.2%	93.5%	93.5%
■ Mpumalanga	93.1%	93.2%	93.2%	92.9%
■ Limpopo	93.4%	94.1%	93.8%	93.1%
■ North West	64.1%	63.9%	65.8%	64.5%
■ Northern Cape	93.0%	92.4%	93.1%	93.3%
■ Eastern Cape	93.6%	93.8%	94.3%	94.0%
■ Free State	93.9%	94.3%	94.4%	94.4%

Quarterly LPM RTP % - F2010: Qrt 1-4*

[Return to player/punter]

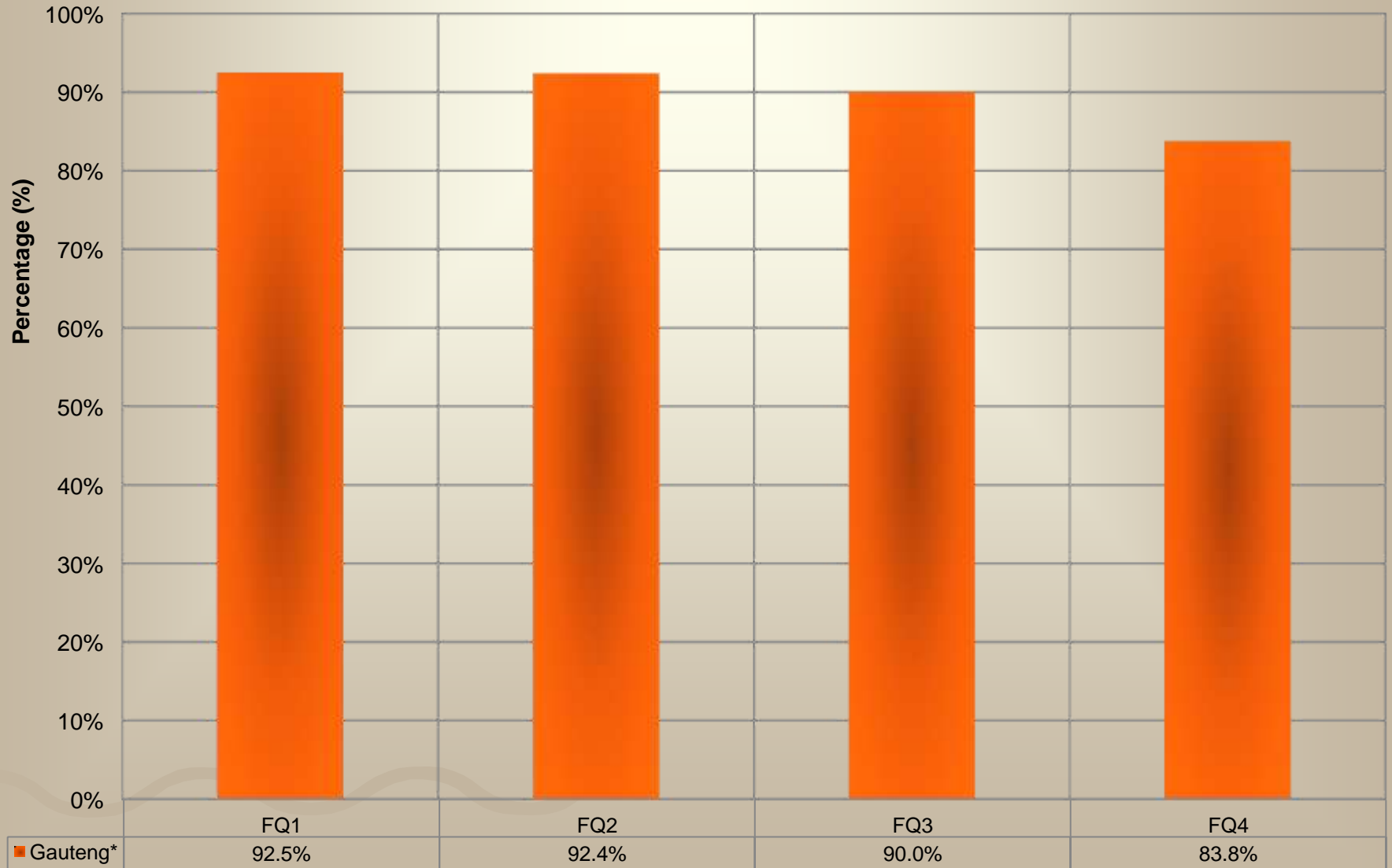


	FQ1	FQ2	FQ3	FQ4
■ Gauteng	0.0%	90.1%	90.1%	90.2%
■ Western Cape	89.6%	89.6%	89.6%	89.6%
■ KwaZulu-Natal	89.3%	89.3%	89.3%	89.4%
■ Mpumalanga	88.6%	88.6%	88.7%	88.8%
■ Limpopo	89.0%	89.2%	89.2%	90.6%
■ North West*				
■ Northern Cape*				
■ Eastern Cape	88.7%	88.8%	88.5%	88.8%
■ Free State*				

* LPMs not yet rolled out

Quarterly bingo RTP % - F2010: Qrt 1-4*

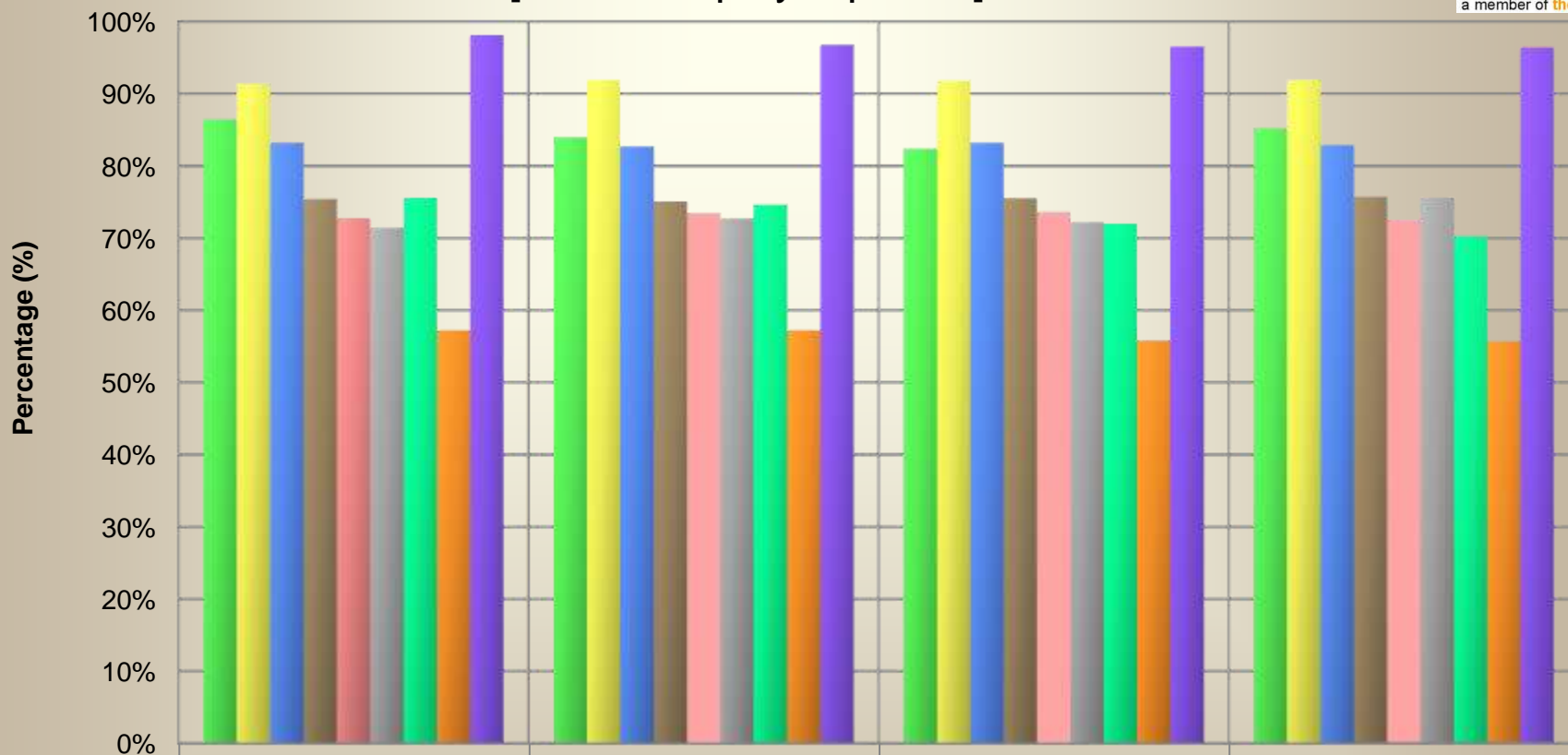
[Return to player/punter]



* Bingo offered for play only in Gauteng

Quarterly betting RTP % - F2010: Qrt 1-4

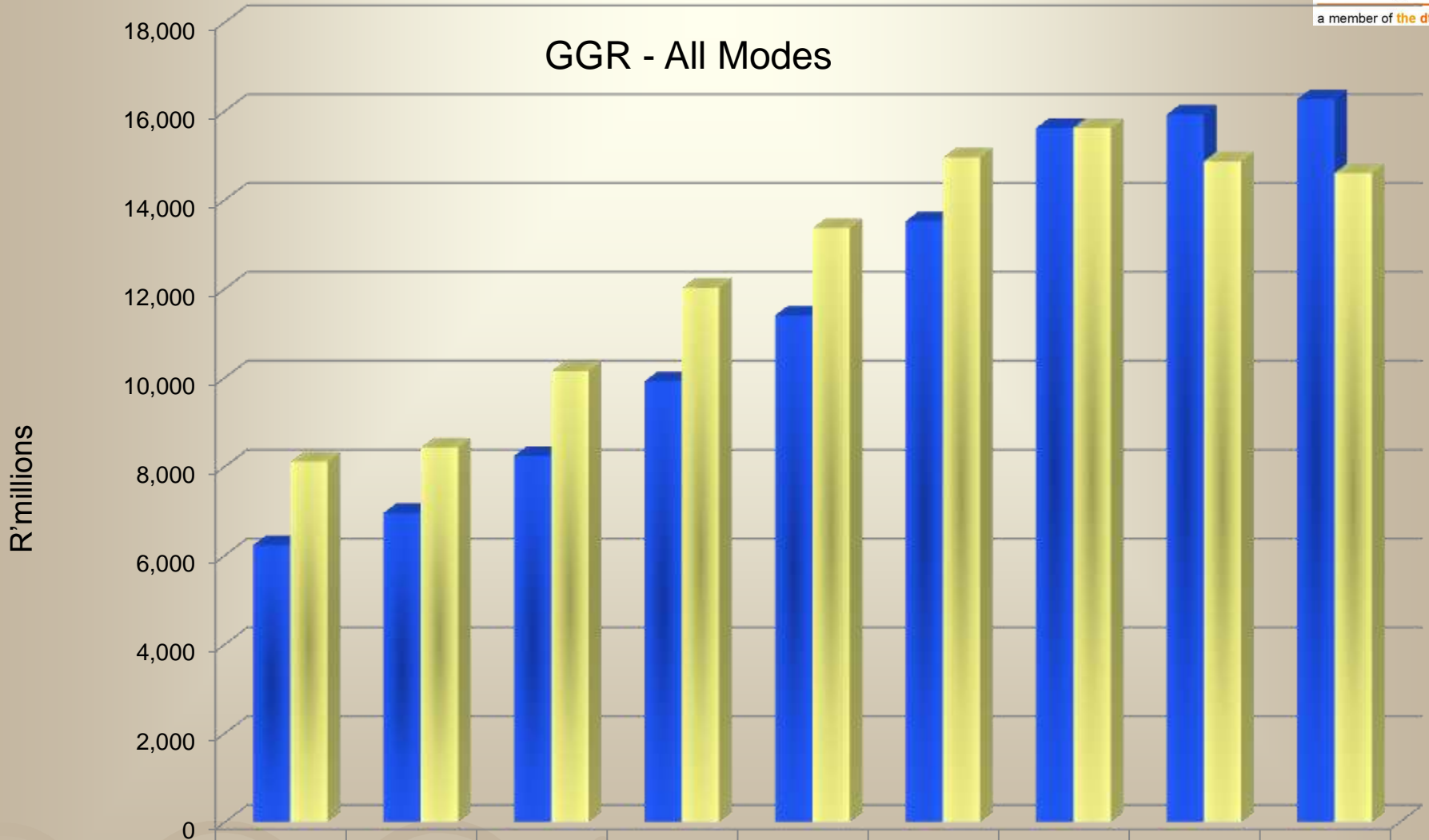
[Return to player/punter]



	FQ1	FQ2	FQ3	FQ4
■ Gauteng	86.4%	84.0%	82.4%	85.2%
■ Western Cape	91.4%	91.9%	91.8%	91.9%
■ KwaZulu-Natal	83.2%	82.7%	83.2%	82.9%
■ Mpumalanga	75.4%	75.1%	75.5%	75.7%
■ Limpopo	72.8%	73.5%	73.6%	72.5%
■ North West	71.4%	72.7%	72.2%	75.6%
■ Northern Cape	75.6%	74.6%	72.0%	70.3%
■ Eastern Cape	57.2%	57.2%	55.8%	55.7%
■ Free State	98.1%	96.8%	96.5%	96.4%

Trend in GGR – F01/02 to F09/10

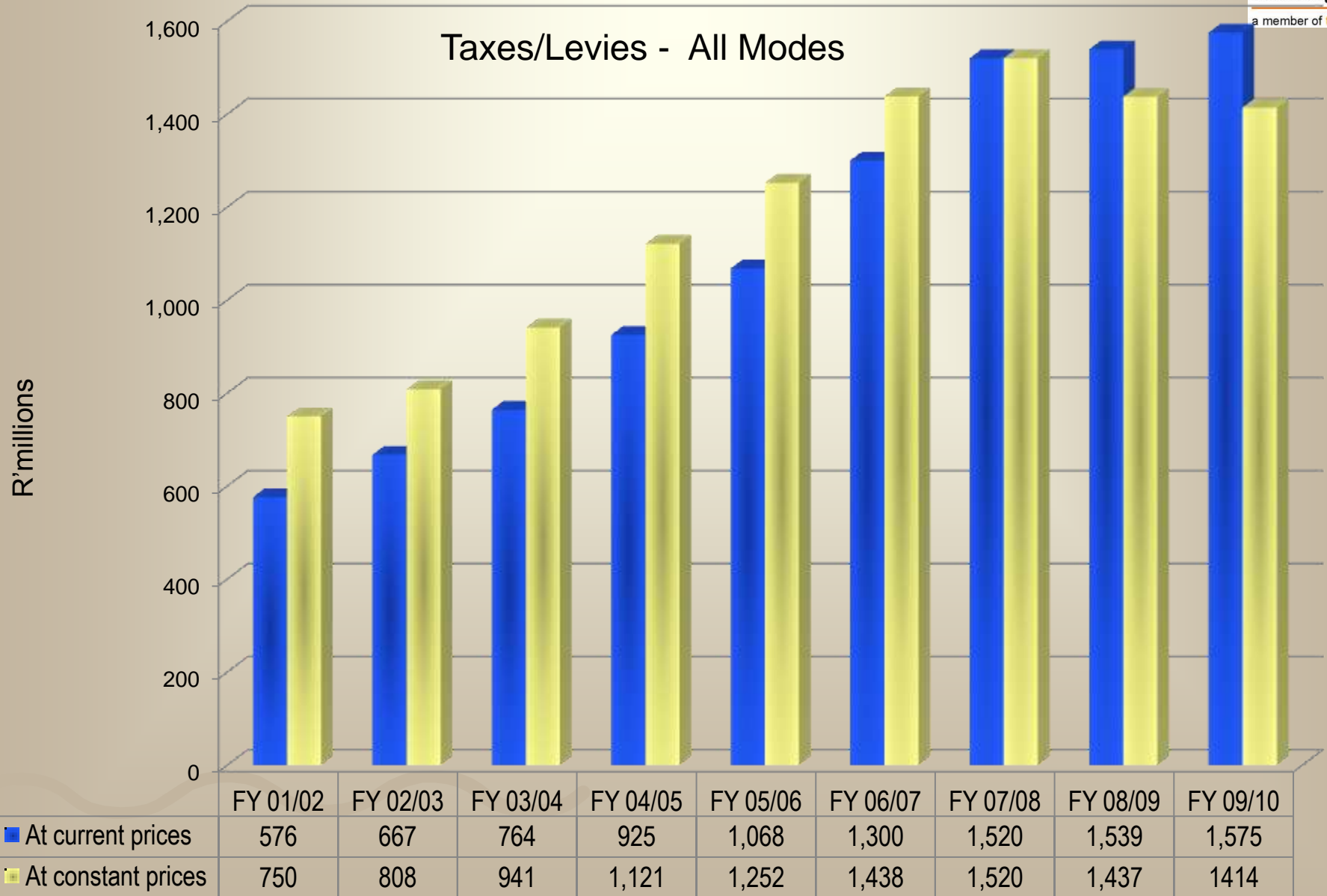
GGR - All Modes



■ At current prices	6,227	6,954	8,240	9,918	11,400	13,520	15,618	15,921	16,268
■ At constant prices*	8,108	8,429	10,148	12,022	13,365	14,956	15,618	14,866	14603

GGR is deflated with the 2010 rebased Consumer Price Indexes of Stats SA. CPI deflator at 2008 prices.

Trend in Taxes/Levies – F01/02 to F09/10



Taxes/levies are deflated with the 2010 rebased Consumer Price Indexes of Stats SA. CPI deflator at 2008 prices.